

OPERATION MANUAL

Carefully read these instructions
before starting and using your saw!

Set-up & instal-
lation
Use
Maintenance
Accessories



LOG SAW WK 600 B CLASSIC



Made in Ger-
many



Südharzer Maschinenbau GmbH
Helmestraße 94 · 99734 Nordhausen/Harz
Zentrale: ☎ 03631/6297-0 📠 6297-111
Internet: www.bgu-maschinen.de
e-mail: info@bgm-maschinen.de

TABLE OF CONTENTS

1. GENERAL INFORMATION	3
1.1 About the manual	3
1.2 Delivery and transport claims	3
2. PRODUCT OVERVIEW	5
2.1 Log-saw with gasoline engine	5
3. DECAL LISTINGS	6
4. SAFETY RULES	8
4.1 Safety rules about saw blade	9
4.2 Mandatory application field	9
5. OPERATION	10
6. REPAIRS AND MAINTENANCE	11
6.1 First maintenance after initial start-up	11
6.2 Ordinary maintenance	12
6.3 Cleaning after use	12
6.4 Replacing the saw blade	12
6.5 Tensioning and replacing the V-belt	13
6.6 Consumables	13
7. HANDLING AND Transport	14
8. DISPOSAL	14
9. Technical Data	15
9.1 Noise emissions	15
10. TROUBLE-SHOOTING CHART	16
11. OTHER AREAS OF POSSIBLE HAZARD	16
11.1 Mechanical dangers	16
11.2 Environmental dangers	16
12. WARRANTY	17
13. SPARE PARTS for WK 600 B classic	18
14. CE – STATEMENT OF COMPLIANCE	23

1. GENERAL INFORMATION

Dear customer, thank you very much for your trust and preference in choosing our equipment and joining the number of our best customers in the world. We are confident that our equipment will be up to all your expectations and assure you a long lasting quality and performance.

1.1 About the manual

Please take time to read this manual and learn to how operate and maintain the saw safely.

For your easier reading this manual is laid out in several sections progressively numbered 1 through 14 and listed on the "content" page.

The information, pictures and technical data in this document reflect current or planned product features, functions, and characteristics as of the publication date. Because of on-going product improvements and feature additions, information in this document is subject to change without notice.

If you are experiencing a problem or functional trouble on your machine, please read the "trouble-shooting" section to identify possible causes and remedies. If the problem or functional trouble is not listed in the troubleshooting chart contained in this manual, ask your Authorized Service Centre for service. When you have checked all the possible causes listed and you are still experiencing the problem, ask your **Authorized Service Centre** for help.

When you order parts maintenance or repair services, your Authorized Service Centre, your dealer or eventually the manufacturer need your machine serial number and engine serial number. These are the numbers that you have recorded on the product identification label of the manufacturer on the machine.

1.2 Delivery and transport claims

Upon delivery of the machine please check for visual machine damages such as damaged packing or scratched buckled parts. If so, make a remark on all copies of the delivery bill before signing for acceptance.

Also have the truck driver sign al copies of the delivery bill.

Should your shipper or the truck driver refuse to accept your claim, fully reject delivery and make sure to inform us (the manufacturer) immediately. No claims shall be taken into account by the shipper or by the insurance company, if a reservation note is not made on the delivery bill.

All transport damages including hidden ones must be notified within latest 2 days from delivery. Therefore delivery must be collected and inspected within this term. Later claims shall be disregarded.

In case of assumed but not visually clear transport damages make sure to mark the following sentence on the delivery bill: **„Reserved delivery due to assumed transportation damages.“**

Insurance and shipping companies act with extreme caution in case of transport damages and sometimes refuse to accept responsibility. Please make sure to provide clear and exhaustive evidence (photos) of the claimed damages.

Thank you in advance for your help and understanding in this matter.

2. PRODUCT OVERVIEW

2.1 Log-saw with gasoline engine



3. DECAL LISTINGS



1. Warning label „Do not operate the machine indoors!“

Never run the machine inside a closed area.
Exhaust fumes are toxic!



2. Aufkleber Safety pictogram „Wear ear plugs and goggles!“

Loud noise can cause impairment or loss of hearing, wear a suitable protective device such as ear plugs and safety goggles.



3. Personal protection sign

Mind these instructions for safe operation!



4. Machine safety label „Before operating the machine read this manual and mind all safety instructions“

To avoid personal injury or death, carefully read and understand all instructions pertaining to the saw including the engine manufacturer's operating and maintenance instruction manual.



5. Safety-alert symbol

Read and recognize safety information. Be alert to the potential for personal injury when you see this safety-alert symbol.



6. Personal protection sign “Wear suitable protective boots!”



7. Personal protection sign “Wear suitable protective gloves!”

This label shows that you must wear safety gloves when working with the saw.



8. Machine safety label

„Before setting-up, servicing, maintaining and cleaning the machine, disengage power and stop the engine. Lock the tool and secure it against accidental start.“

This safety label reminds users of a pinched hands danger.



9. “BGU-maschinen” Manufacturer’s logo



10. Identification label „Product identification“

This label shows the company details of the manufacturer and the main machine technical data.

BEWARE!
hot parts

11. Machine safety label Keep your hands off all machine parts identified by this label! Burning danger.

4. SAFETY RULES



Strictly perform installation, set-up, maintenance, cleaning and transportation with the motor switched off and the blade firmly secured against accidental operation. Immediately disconnect power off the machine in case of any eventual fault or trouble.



Before operating the saw for the first time read and familiarize with the instructions of the engine manufacturer!

The user shall strictly comply with these operation, set-up, maintenance, repair and trouble-shooting instructions in order to assure safe operation and no damages to the equipment. Moreover we recommend to let the machine be run and maintained only and strictly by trained and skilled staff who must be familiar with the applicable occupational safety and health administration rules as well as applicable transportation rules. Incorrect use of the saw can cause serious injury or death.

No person under school leaving age should operate a circular saw. Those who have reached school leaving age but are below the age of 18 may operate a circular saw, if supervised by a competent person of 18 years or over. The machine shall be installed and kept in a suitable location selected by the customer for safest operation. The working area around the machine must be kept as clear as possible from surrounding obstacles and slippery foundation floors should be duly treated (do not use saw dust or wood ash for this purpose). Make sure that the equipment stands on a safe stable foundation. Do not allow within the hazardous zone any unauthorized third or persons who are not familiar with the dangers related to use and operation of the machine. Allow no bystanders, especially children and pets in the working area.

- Due and proper illumination of the working site must be provided at all times.
- The saw blade must be duly sharpened for maximum performance and no recoil danger. Flash and chips must be removed off the crown wheel.
- Damaged or buckled blades (very likely to break during operation) should not be used.
- Always wear suitable hearing (ear plugs or muffs) and eye protection(goggles or safety glasses) while operating the machine.
- Set up the machine on a firm surface which is free from stumps, boulders and other obstructions and ensure that a wide but confined area is available around the machine.
- Operators must wear steel toe safety shoes and snug-fitting tear-resistant work cloths.
- No additional customised protections or tools should be provided on board of the machine, other than the ones designed and supplied by the manufacturer.

- Do not apply pressure (for instance by means of the wood stock) against the blade to make it come to a quicker stop.
- The machine is not designed for indoor use (dust release).
- NEVER leave the machine unattended with the running motor.
- Before leaving the operator's station for any reason, stop the engine, disconnect power and secure the machine against accidental operation.

4.1 Safety rules about saw blade

The unit is strictly designed for use with a 600mm (outer diameter) blade. The blade (Cr) is capable to withstand a maximum number of revolutions of 3000 rev. per minute.
Strictly use blades as per EN Standard 847-1.

Do not ever use worn out blades in need of sharpening.
Make sure that the blade shows good conditions, no damages, no cracks, no buckling and no missing/broken teeth/bits.

Hard metal blades require special care and handling. Make sure that the blade bits do not ever hit against hard surfaces (for example concrete floors), which might cause invisible bits damage.
Hard metal blades must be suitable to operate at 3250 revolutions per minute.

4.2 Mandatory application field

These log-cutting saws are strictly designed for preparation of firewood. Sawing to be strictly performed with wood stock on the log carriage. All other applications are forbidden and considered as "misuse". The manufacturer is not liable for any damage or injury resulting from misuse!

The machine is capable to handle wood stocks in diameter of 8-19.5 cm. Shrubs and tiny branches bundles must be loaded on the trough and securely hold on both sides of the blade.

The machine is strictly conceived for ONE-MAN OPERATION ONLY.

Check the tension of the V-belt before first use!



Misuse will completely void your warranty. The manufacturer accepts no liability for personal injuries and damages to other equipment caused by misusing the machine.

5. OPERATION

This log-cutting saw model WK 600 B Classic is ideally recommended for stationary use in your yard.

A rugged all-steel construction assures longest machine life at any operative condition.

This machine is equipped with inbuilt gasoline engine for independent power provision. **Please read the instructions of the engine manufacturer before use.**

When you switch the machine on make sure to check that the blade is mounted to rotate in the proper direction before cutting any material. The tool must rotate against the operator that is upward toward the operator. Load the log in the carriage and **smoothly** push to the blade. Make sure to avoid inhaling gasoline vapors during use.



If you working with twisted or crooked logs make sure to load the log on the carriage, so that the bogged side of the log is turned to the blade in order to avoid the log from tipping over or jamming during cutting and consequent possible even major damages to the blade.

Now fasten the grip on the log carriage and push to smoothly tilt it over towards and through the blade.



NOTE: avoid excessive pressure on the carriage through the blade with cutting. Excessive hold-down pressure may slow the blade down and cause dangerous jamming!

When pushing the log through the blade doing so avoid all jerky, bumpy movements that could lead to risky and dangerous situations. Timber in maximum diameter of 200mm and length of 1.1 m must lay on the carriage by the entire length with no projecting end.

After the first log is cut off the timber, let the carriage swing down to start-position (wide opened) before advancing the remaining timber to the blade and starting a new sawing cycle.

If you try to feed the stock forward and cut before the carriage reaches back to start position, you may run the risk of hitting the stock against the blade guard consequently causing severe personal injuries and machine damages for which the manufacturer carries no liability.

If the maximum 16 mm spacing between clearance inserts (wood strips) is reduced because of excessive wear, provide for immediate replacement of the wooden inserts! (see Figure 1)

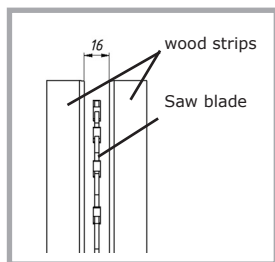


Fig. 1

6. REPAIRS AND MAINTENANCE



Make sure that the machine is fully disconnected and all moving parts are secured before performing any maintenance/repair work on the machine. In the event of any malfunctioning, switch the machine off before trouble-shooting.

6.1 First maintenance after initial start-up

Check and tighten all fixation elements after 1 operation hour, in order to avoid damages to the motor.

Make sure to check the torque of all fixation hardware used for the driving pulley of the motor. Adjust torque, as necessary.

Procedure:

Fig. 2

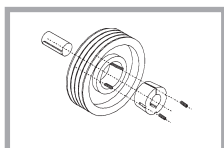


Fig. 3

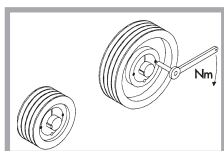


Fig. 4

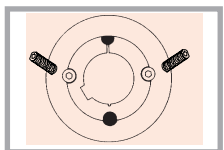


Fig. 5

- Unscrew and remove the cover 2 (pos. 8 of the spare part list) over the pulley by removing the 4 hex screws M6x16 and relative washers (pos. 31, 23 see spare part list)
- Remove screw M8x25 (Pos. 41) with its spring lock (Pos. 40, of the spare part list) and washer (Pos. 38, of the spare part list)
- Check the torque of both threaded pins and adjust them, if necessary, using a wrench 3 with 5.7 Nm torque (fig. 5)

6.2 Ordinary maintenance

The following tasks belong to ordinary maintenance works:

- Clean the machine from eventual residual wood, chips or dirt.
- Lubricate all moving parts.
- Grease all pivoting parts of the log carriage

6.3 Cleaning after use

Remove wood chips and saw dust produced and left on the machine during work.

Clean the log carriage assembly removing all wood rests.

6.4 Replacing the saw blade



Safety note ! Wear safety gloves - pinched hands danger!
Before replacing the blade make sure to disconnect the machine from power (unplug the electric motor or turn the tractor off).

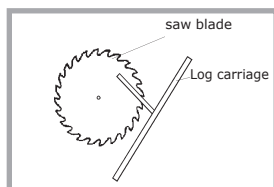


Fig. 6

Following instructions apply for safe and proper blade replacement:

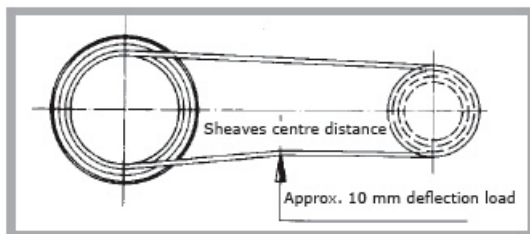
- Disconnect power off the machine (unplug power cord or stop the motor of the tractor) and wait for the blade to come to a complete stop.
- Tilt the upper blade hood over by releasing the 4 screws
- Release and undo the fixation bolt on the blade clamping flange using a spanner to secure the blade flange on the motor side as you undo the nut (spanner SW 41).
- Remove the clamping flange.
- Pull the old blade off the shaft (make sure to wear tear-resistant gloves. DANGER!)
- Fit the new blade on the shaft. Note direction of rotation. All tools must always work against the feed direction that is revolutions must occur towards the operator's station. (see Figure 6)
- Mount the locking flange back on the blade shaft minding the right position of the feather-key in the flange.
- Tighten fixation bolt on the flange. BEWARE: when assembling the new blade make sure to follow the dismantling procedure: saw blade, external saw blade clamping flange, washer, fixation screw.
- Refit the blade hood in the original position duly set and clamped.

Saw blades, where tips do not any longer show through the slot in the log carriage with the saw in its start/positions, will have reached the end of their regrind life and shall be taken out of service.

6.5 Tensioning and replacing the V-belt

If you are operating a WK 600 B model, proper maintenance requires re-tensioning of the belt after a certain number of operation hours. To perform stretching of the V-belt, you need adjusting the special regulation screw located underneath the gearbox cover. Release the engine mount fixation and adjust the V-belt so that you can still provoke an approx. 10 mm of deflection by applying one finger tip pressure (see figure 7 - Stretching of the V-belt). Fit the gearbox cover and the engine mount back into place before operating the machine again. Running the saw with a loose V-belt will cause increased wear and shorten you belt life.

Figure 7
Stretching of the V-belt



To replace the belt, release the clamp-screws and remove the safety guard from the V-belt drive area. Remove the old belts from the sheaves and fit the new ones on. Make sure to refit the V-belt casing back in place before operating the machine again.

BEWARE: failure to provide due re-tensioning will result into a less efficient V-belt drive that slips and may be wear out faster

6.6 Consumables

Consumable parts that are subject to normal wear are not covered by the manufacturer's warranty. These are:

Saw blade (Code 95004 for HM versions)

Wood strips (Code 54383)

V-belt (Code 56187)

7. HANDLING AND TRANSPORT

These log & timber cutting saws are light equipment that can be easily moved on short-distance by means of two caster wheels and an ergonomic, comfortable grip handle located on the chassis on the opposite side as the log carriage. In order to avoid infringement of the clearance area around the machine, the grip handle can be swivelled up and down on the model WK 600B.

Simply fasten the grip and lift the saw for safe and rapid hauling of the machine.

For safety reasons the grip handle should remain retracted (or lifted up) during work to avoid risk of tripping or entanglement.

8. DISPOSAL

When the machine is fully obsolete and cannot be of any longer use, it should be duly dismantled ahead of discarding. Certain components need deactivation and dismantling in order to assure that no further use is made by other parties and that no worn out parts are recycled for other applications.

During dismantle be alert for possible recyclable materials and components that belong to differentiated waste collection procedures applicable in your country.

The manufacturer is not liable and undertakes no responsibility for personal injuries or damages that may result from the recycling of worn out machine parts and eventual re-use in other applications different than originally stated in this manual.

Dismantling procedure:

Take good note please: each and every dismantling task must be performed by authorized service centres or trained skilled staff only!

- Lock and secure all moving parts of the machine and pull the machine down into single components
- Deliver each single component only to authorized waste management facilities
- Remove rubber and plastic parts from the machine that must be separately disposed

Deactivated, clamped moving/driving parts and components are of no further risk and danger.

9. TECHNICAL DATA

Technical data	Unit/Measure	WK 600 B Classic
Max. timber diameter	mm	195 (7.6 in)
Saw blade diameter	mm	600/30
Power of gasoline engine	PS	5
Engine speed	RPM	3600
Saw blade speed	RPM	1780
Length	mm	900 (35.4 in)
Width	mm	680 (26.7 in)
Height	mm	1030 (40.5 in)
Weight	kg	95 (209 lbs)

9.1 Noise emissions

The noise level was measured in compliance with the general rules for establishment of noise and acoustic pollution of garden and agricultural equipment on work sites as well as with other national standards for noise measurement. The applicable measuring parameters were: Measurement on the machine front edge at 1600 mm height and 400mm away from the blade on the right hand side, while processing beech wood in the size of 80+/-5% of the admissible timber diameter as per this instruction. Detected noise levels:

Without load	92 db(A)
With max load	110 db(A)



Hearing protection is mandatory!!

The above mentioned values are emission measurements and may not be therefore assumed as for a safe work environment. Although there is a relationship between noise emission and immission levels, this is not a sufficient basis to determine the extent of on-site required protection. There are a lot of other factors that can influence site work and risk of injuries and namely: the actual site/buildings configuration, the concomitant presence of other noise sources (for instance other machines performing other works in the neighbourhood) etc... The factors applied for determining safety of a workplace may also vary from one country to the other. We are reporting here the noise values detected in the facility of the manufacturer on order to allow the user performing a better evaluation of the possible risk/disturbance.

10. TROUBLE-SHOOTING CHART

The following section will detail procedures for checking your saw, should you encounter a malfunction.



Before setting, operating, cleaning, maintaining or repairing the processor, read the manufacturer's operating and maintenance instruction manual.

Type of trouble	Possible causes	Remedies
The machine does not start	<ul style="list-style-type: none">- Faulty engine- No gas in tank- Oil level in the engine too low	<ul style="list-style-type: none">- Check/replace the engine- Fill new gas- Touch up the oil
The machine starts but the blade is not running	<ul style="list-style-type: none">- Locking flange of the blade shaft or engine side is not tight	<ul style="list-style-type: none">- Tighten both the screw and its nut
Blade chops	<ul style="list-style-type: none">- Stump blade	<ul style="list-style-type: none">- Sharpen or replace the blade

11. OTHER AREAS OF POSSIBLE HAZARD

11.1 Mechanical dangers

Possible dangers related to machine moving parts (saw blade) are minimized by means of suitable safeties and protections that cannot be dismantled unless special tools and equipment is used. Do not attempt to remove or by-pass any of the machine inbuilt safeties.

DANGER: removing or by-passing inbuilt machine safeties may result into serious operator's personal injuries.

11.2 Environmental dangers

The machine is strictly designed for outdoor applications.

DANGER: do not operate the machine indoors to avoid risk of inhaling wood dust.

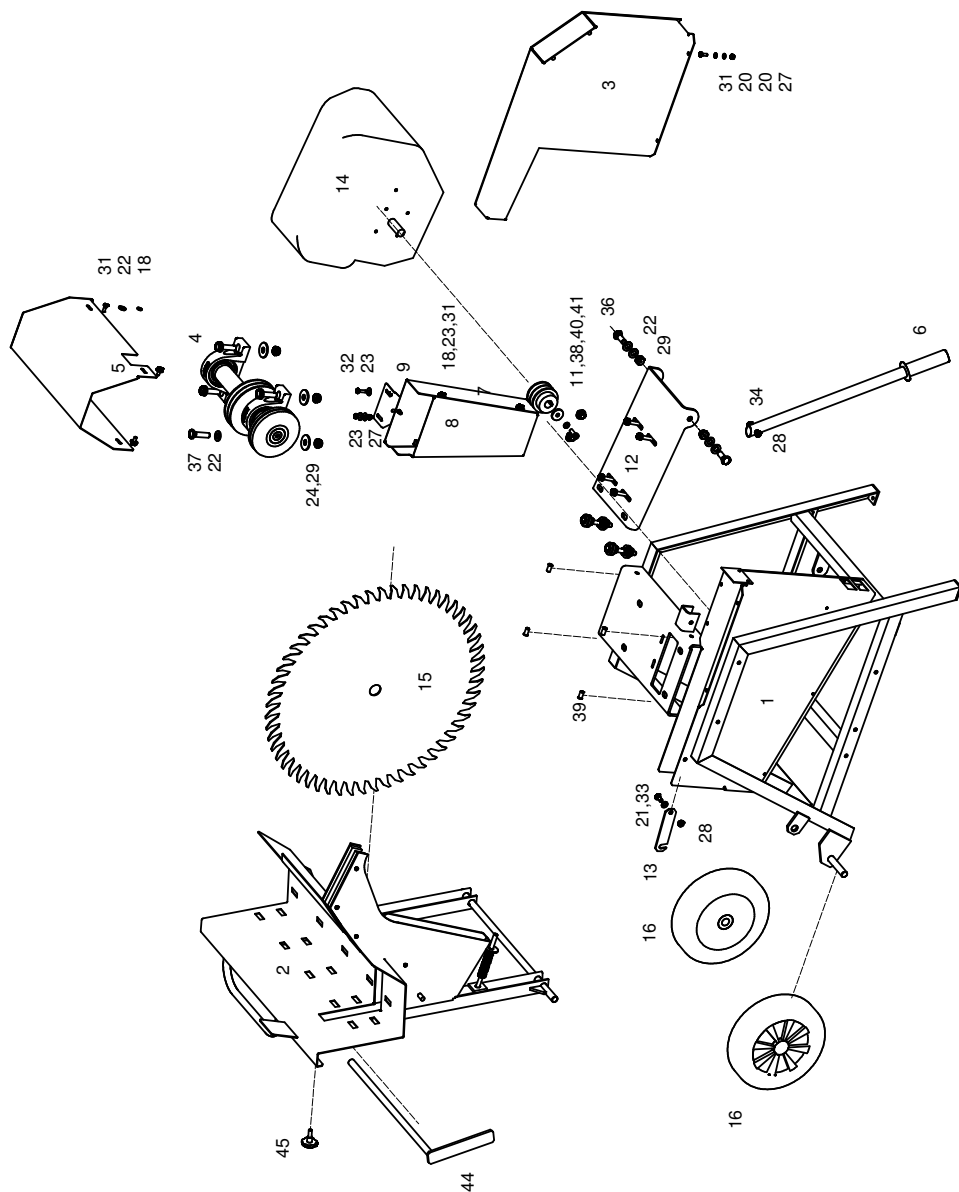
12. WARRANTY

All BGU machines are covered with warranty terms in accordance with the law. Customers should promptly notify the manufacturer eventual material or production claims on their detection. While asking for warranty service, customer should show copy of their purchase invoice or receipt. The warranty does not cover for faults due to natural wear, temperature or weather agents as well as misuse, faulty installation or set-up, improper operation and lubrication or acts of vandalism.

No warranty will be given on parts damaged by improper handling, use and application. The manufacturer is further not responsible for warranty service on machines used for other applications than mentioned in this manual, altered or modified by the customer or other thirds, or overloaded. Never attempt to use an incomplete machine or one fitted with unauthorized modification. Any modifications to your machine can cause personal injuries, and will void your Warranty.

Consumable parts with a prescribed life (i.e. pulleys, tools, blades and various auxiliary materials) are excluded from the warranty as well as adjustment, optimization and fine-setting or retrofitting works.

13. SPARE PARTS FOR WK 600 B CLASSIC



Pos.	Description	Code	DIN	Dimensions
1	Steel stand assembly	24661		
2	Log carriage assembly	20531		
3	Upper saw hood, assembly	20977		
4	Saw arbor, complete assembly	24678		
5	Cover for saw arbor assembly	24685		
6	Grip handle, assembly	24688		
7	V-belt casing 1	24681		
8	V-belt casing 2	24682		
9	Angle plate for V-belt casing	24683		
11	Drivingpulley of the engine	24684		
12	Engine mount	24690		
13	Locking lever	20907		
14	Honda gasoline engine	53897		
15	Circular saw blade	95004		600x2,8x30(d=30H8)
16	Caster wheels	52565		200x50x16
17	Raw-edge V belt	56187		AX 40 1046 LP
18	Multi-range blind rivet (multigrip)	51847		d=4,8 l=11 (1,5-6,5mm)
19	Spring washer	51705	127	B6
20	Washer	51647	125	6,4
21	Washer	51648	125	8,4
22	Washer	51650	125	13
23	Washer	51969	9021	6,4
24	Washer	51698	9021	10,5
25	Washer	51651	125	10,5
26	Washer	51699	9021	13
27	Self-locking hex nut	51606	985	M6
28	Self-locking hex nut	51607	985	M8
29	Self-locking hex nut	51609	985	M12
30	Hex nut	51594	934	M10
31	Hex screw	51429	933	M6x16
32	Hex screw	51431	933	M6x20
33	Hex screw	51443	933	M8x16
34	Hex screw	51454	933	M8x50

Pos.	Description	Code	DIN	Dimensions
35	Hex screw	54467	933	M10x80
36	Hex screw	51478	933	M12x30
37	Hex screw	51481	933	M12x45
38	End plate	10612		
39	Blind rivet nut	51987		M6 L=19 (3-5,5) D=9
40	Spring washer	51706	127	B8
41	Hexagon socket button head screws	51552	7380	M8x25
42	Hex screw	52134	933	M8x45
43	Washer	51697	9021	8,4
44	Side stop	21642		
45	Star grip screw	51006		D=40 M8x20

14. CE – STATEMENT OF COMPLIANCE

with the EC Machines Directive No. 42/2006 and EMV (Low Voltage) Directive 108/2004

We hereby declare that the equipment described in this manual responds in full to the actual version brought on the market. We, the manufacturer further declare that this equipment was duly designed and manufactured in accordance with the actual European Safety and Health Standards settled by the relevant EEC directives as well as the latest electromagnetic standards issued by the European Council and later enforced by all member states.

This statement of compliance does not apply to customer modifications of the equipment without manufacturer's prior written approval.

Machine type:

Log saw

Models:

WK 600 B Classic

Production No.:

see Machine Identification Plate

Applicable European Standards:

EC Machine Directive 42/2006
EC Low Voltage Directive EC 95/2006
EC-EMV (ElectroMagnetic Compatibility) Directive 108/2004

Other applicable Standards:

Full compliance to the European safety rules was assured by enforcement of the following harmonised Standards
EN ISO 12100-1:2009, EN ISO 12100-2:2009, EN ISO 13857:2008, EN 60204-1:2007, EN 1870-6:2010;
EN 847-1:2007

Type-certification tests have been carried out by the following Official Certification Body, number 2157, in accordance with Annex IX of the EC Directive no. 42/2006. The product specimens were found fully conformant to the applicable technical Standards and to the related control type which is described in the technical documents and for which a type-approval certificated was already released.

Prüf-und Zertifizierungsstelle des
Spitzenverbandes der Landwirtschaftlichen Sozialversicherung
Weißensteinstraße 70-72
34131 Kassel
Registered with no. 2157

Person in charge of the technical documents: Jörg Kernstock (Management)

Südharzer Maschinenbau GmbH

Helmestraße 94 · 99734 Nordhausen/Harz
Service-Tel. 03631/6297-104 · Fax 03631/6297-111
Internet: www.bgu-maschinen.de
e-mail: info@bgu-maschinen.de

Nordhausen, 10.01.2011

Date

Official user's language: English



Jörg Kernstock (Director)

(User's release)



Südharzer Maschinenbau GmbH
Helmestraße 94 · 99734 Nordhausen/Harz
Service-Tel. 03631/6297-104 · Fax 03631/6297-111
Internet: www.bgu-maschinen.de
e-mail: info@bgu-maschinen.de

Subject to changes without notice

Form: 2044.10.01.2011 - Rev.D
